

MONTHLY MEMBERSHIP PROGRESS REPORT

District 2 S1

Results as of: 3/31/2026

GMT:

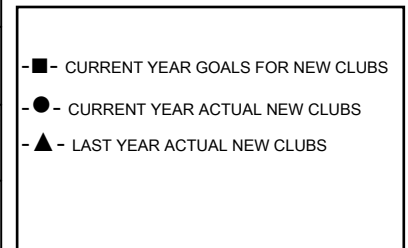
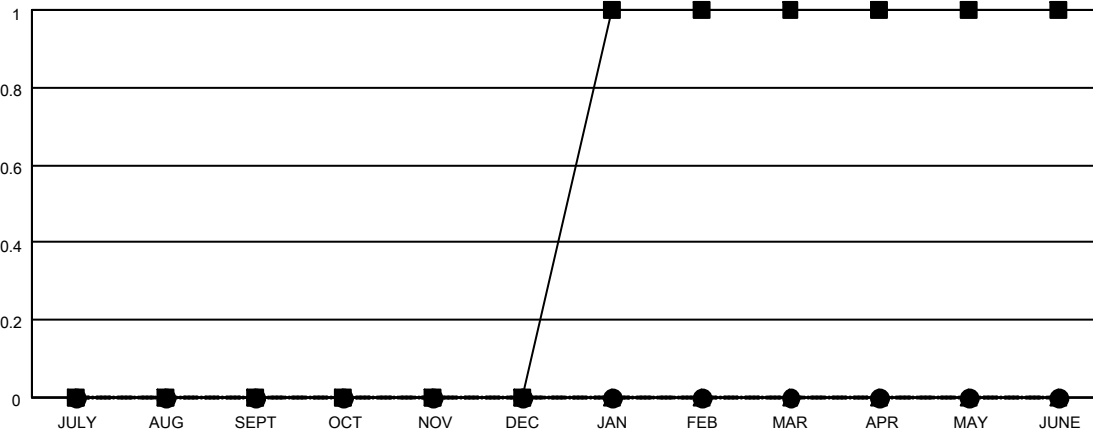
LOCATION TEXAS

GMT CA

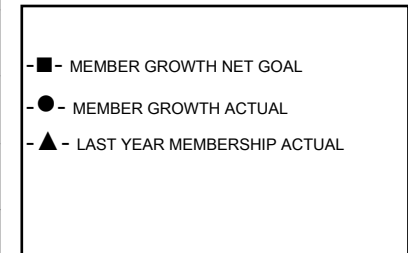
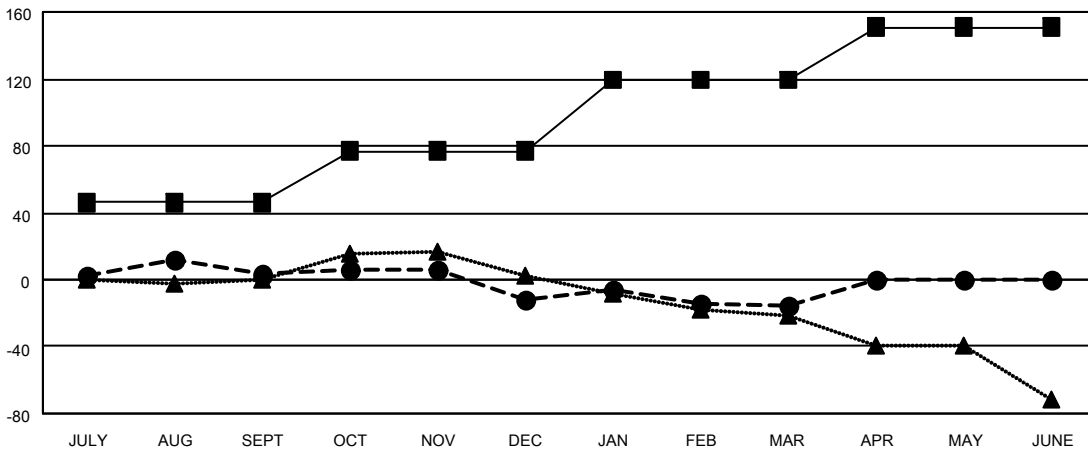
Clubs			
RESULTS FOR 2025-2026			
QUARTER	NEW CLUB GOAL	NEW CLUBS	DROPPED CLUBS
JULY/AUG/SEPT	0	0	0
OCT/NOV/DEC	0	0	0
JAN/FEB/MAR	1	0	0
APR/MAY/JUNE	0	0	0

Members			
RESULTS FOR 2025-2026			
QUARTER	MEMBER GROWTH NET GOAL	MEMBER GROWTH ACTUAL	DROPPED MEMBERS ACTUAL (including transfers)
JULY/AUG/SEPT	46	35	31
OCT/NOV/DEC	31	25	40
JAN/FEB/MAR	42	40	42
APR/MAY/JUNE	32	0	0

GOALS AND ACTUAL NEW CLUBS CUMULATIVE



GOALS AND ACTUAL MEMBERS CUMULATIVE



DROPPED CLUBS: 0	21 CLUBS OF 42 ADDED 1 OR MORE NEW MEMBERS	<u>GENDER DISTRIBUTION</u>	
<u>DROPPED MEMBERS</u>		MALE	966 (72.36%)
DECEASED	8	FEMALE	368 (27.57%)
CLUB CANCELLED	0	TOTAL FAMILY UNIT MEMBERS	
OTHER	104	190	
TOTAL	112	FAMILY MEMBERS PAYING HALF DUES	
		99	

[CLICK HERE FOR CUMULATIVE MEMBERSHIP DATA](#)